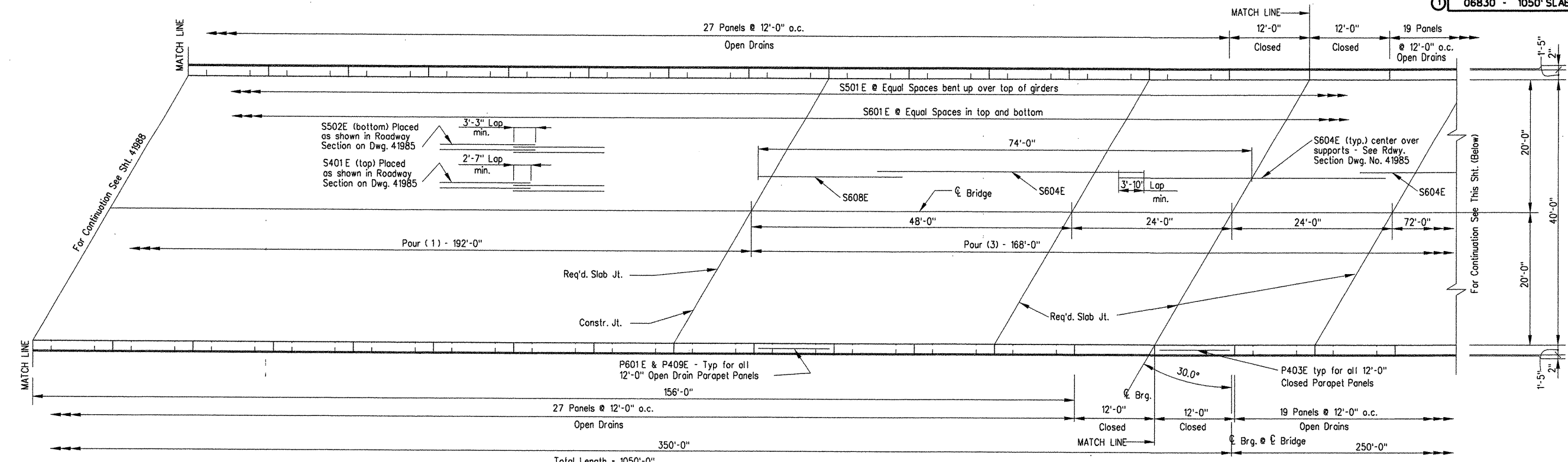
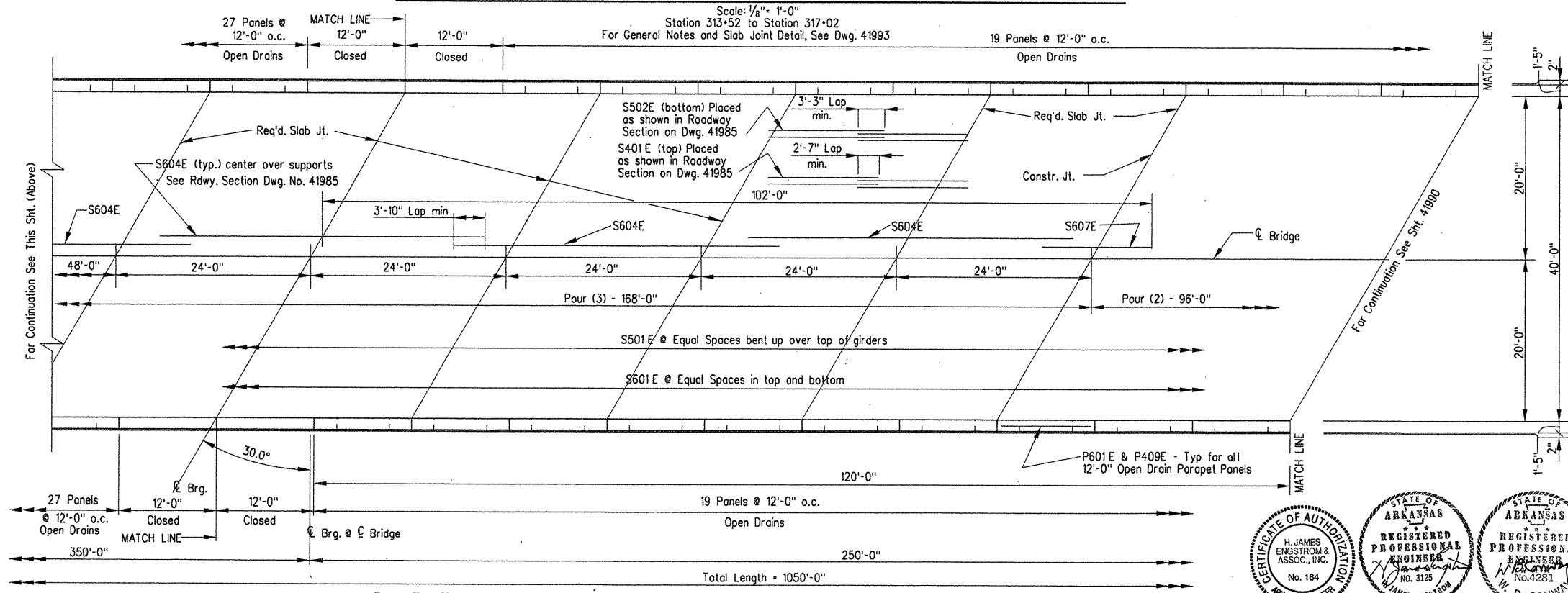


DATE REVISED	DATE FILMED	DATE REVISED	DATE FILMED	FED. ROAD DIST. NO.	STATE	FED. AID PROJ. NO.	SHEET NO.	TOTAL SHEETS
6-3-2010				6	ARK.			
				JOB NO.	1 10394			77
				06830 - 1050' SLAB PLAN - 41989			196	



SLAB PLAN 1050' CONT. COMP. PLATE GIRDER UNIT 1 - SPAN 2



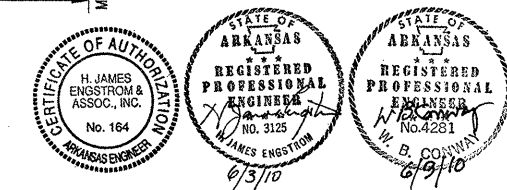
SLAB PLAN 1050' CONT. COMP. PLATE GIRDER UNIT 1 - SPAN 3

Scale: 1/8" = 1'-0"
Station 317+02 to Station 319+52
For General Notes and Slab Joint Detail, See Dwg. 41993

Revised and Redrawn By AHTD
KDH - 6-3-10 Checked By: HJE/MM

ALTERNATES NO. 1 & NO. 2
BRIDGE OVER WHITE RIVER
(SHEET 11 OF 15)
DETAILS OF 1050'-0" CONT. COMP.
PLATE GIRDER UNIT
WHITE RIVER STR. & APPRS.
(CLARENDON) (PH. 11) (F)
MONROE COUNTY

ROUTE 79 SEC. 13
ARKANSAS STATE HIGHWAY COMMISSION
LITTLE ROCK, ARK.
Engstrom/Modjeski and Masters



DRAWN BY: DLG DATE: NOV. 07
CHECKED BY: HJE DATE: NOV. 01
DESIGNED BY: HJE DATE: NOV. 01
BRIDGE NO. 06830 DRAWING NO. 41989
FILENAME: b110394_s11rev1.dgn
SCALE: 1/8" = 1'-0"

COMPANY\1999 JOBS\99-044 AHTD\WHITERIVER\JOB1 10394\1050spn3alt1&2 ACAD SCALE: 1/8" = 1'-0" b110394_s11rev1.dgn 5/21/2010 4:05:17 PM